



AGROECOLOGY LEARNING ALLIANCE (ALiSEA) in Southeast Asia

National Board Members Terms of Reference

January 2025

In partnership
with



Co-funded by
the European Union



FONDS FRANÇAIS POUR
L'ENVIRONNEMENT MONDIAL



Schweizerische Eidgenossenschaft
Confédération suisse
Confederazione Svizzera
Confederaziun svizra



Belgium
partner in development

This document has been produced with the financial assistance of the French Development Agency (AFD), the European Union (EU), the French Facility for Global Environment (FFEM), the Swiss Agency for Development and Cooperation (SDC) and the Directorate-General for Development Cooperation and Humanitarian Aid (DGD). The views expressed herein can in no way be taken to reflect the official opinion of the AFD, EU or FFEM.

1. Background

The Agroecology Learning alliance in South East Asia (ALiSEA, <https://ali-sea.org>), is an open coalition of stakeholders promoting agroecology transition. Initiated in 2015, it aims to enable local and regional agroecology stakeholders to leverage one another's expertise to produce evidence-based studies and share them broadly to support a regional transition towards agroecology.

It has 3 folded objectives: (1) Strengthening knowledge and experience sharing among agroecological initiatives and actors, (2) Increasing visibility and credibility of agroecological movement towards policy makers and consumers and (3) Scaling up the development and adoption of agroecological practice among farmers.

ALiSEA Network gathers to date over **204 member organizations** from different backgrounds and approaches to Agroecology. It is quite unique by its diversity of stakeholders (109 CSOs and NGOs, 17 Farmer organizations, 40 Research & Academia, 29 Private Sectors, 5 Government organizations, 4 Networks) and its governance model based on member-driven network. ALiSEA currently counts five countries: Cambodia, Laos, Myanmar, Thailand and Vietnam. ALiSEA is coordinated at national by the executive team and regional level by GRET.

The ALiSEA network aims to continue **its efforts of structuration and consolidation of its governance and sustainability as a key step towards achieving autonomy**. The ALiSEA governance relies on an adaptive management approach, with flexibility to test innovative mechanisms, adjust and improve the governance arrangement through proofs of concept to integrate members' suggestions and ensure local ownership.

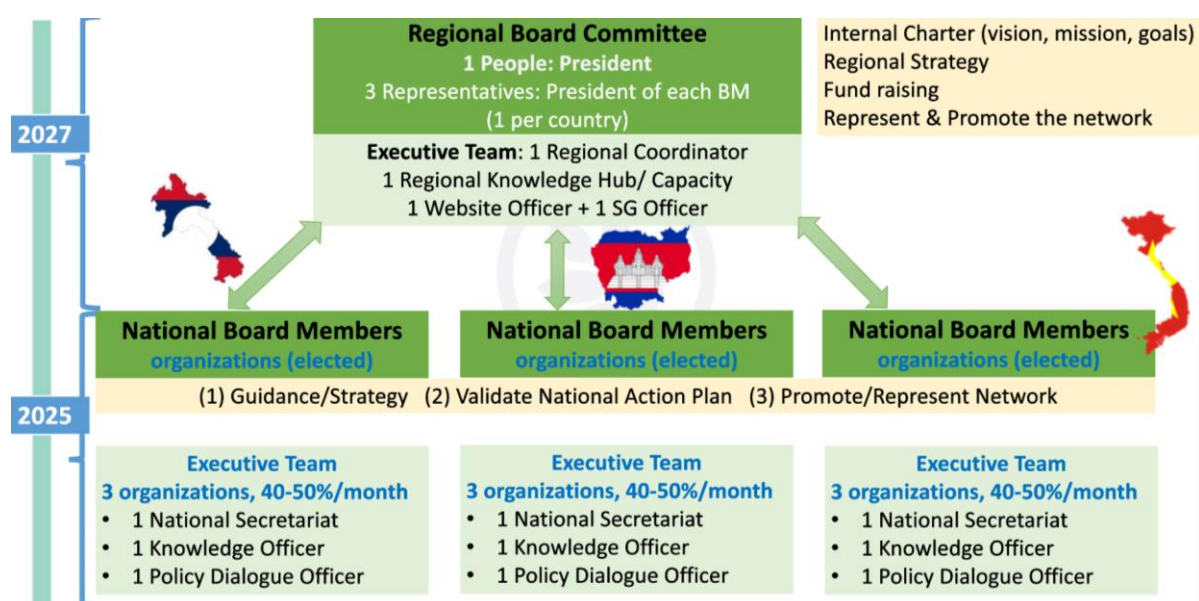


Figure 1: Organization Chart

1. National Board Members (BM)

Following the decision taken at the Regional General Assembly held in March 2024 in Lao PDR, the National Board Members is created in March 2025 and consists of five (5) people from organizations that are members of the ALiSEA network, in order to ensure a balance between the various stakeholder group, listed below:

1. NGO (local and international),
2. Farmers' Cooperative/Federation/Group/Union/Network,
3. Private Sector,
4. Academia/Research centers/government agent
5. Director of the organization hosting the national secretariat

Member organizations can only apply for one stakeholder group, in line with their organization type.

When an individual is no longer able to hold the position on the BM, the position will be declared vacant, and all ALiSEA members invited to nominate as candidates.

The National Board Members will support the ALiSEA national Executive Team, consisting of 3 people: (i) the National Secretariat, (ii) the Knowledge Officer and (iii) the Policy Officer.

2. Responsibilities

a) External role

- Represent and promote the ALiSEA Network in various meetings/conference - role of ambassadors of ALiSEA in external events (national, regional and international)
- Share the vision, mission, objectives and the results of the ALiSEA to all the relevant stakeholders.
- Advocate for resource mobilization in support of the Agroecology Transition interventions in the country.
- Foster good communication and relations with government authorities and policy makers.

b) Internal role

- Provide strategy advice to ALiSEA executive team (strategic directions, priority areas, possible synergies, dissemination strategies, partnership opportunities)
 - Advise on strategic direction;
 - Advise on priority areas and topics;
 - Advise on possible synergies and alignments with other key initiatives in agroecology nationally, regionally and globally;
 - Advise on key project processes and findings, possible complementary learnings and dissemination strategies.
- Involve in major events/workshop to promote agroecology scaling up;
- Guarantee that the strategy and actions are in line with the mission and vision of the network;
- Validate the 4 years' action plan for the country;
- Support to review and monitor the activities implemented;
- Involve in Executive Team recruitment in case of change;
- Support fundraising strategy.

3. Expected contributions

Attend meeting at least twice a year during the national annual General Assembly and the Board members' coordination meeting.

The **National secretariat**, as leader of the network in the country, **is responsible to prepare, organize and facilitate the board meeting** (twice a year) aiming at reviewing the past achievements, and present the upcoming strategy.

Additional participants may be invited and proposed by Board Members, as guest, to join the coordination meeting, depending on needs and strategy.

4. Election of Board Members

- Any ALiSEA member can run for a position on the Board members in line with the type of stakeholder of its organization.
- Elections will be held for each of the 4 positions.
- All ALiSEA members are allowed to vote in the country in which they operate.
- Board Members will be elected by members, on the basis of one-member organization = one vote, with a majority of votes in each country.
- If there are not enough candidates, some board positions could become vacant.
- If a Board member resigns in the first 3 months after an election was held, the BM can offer the role to the candidate with the second highest votes during the election. If this candidate refuses the offer, the Board can then decide between holding a remote election for the position or a direct appointment to fill the vacancy.

5. Terms of participation

Each Board Member position has a four (4) years term, which is renewable.

Participation to the National Board Member is made on a voluntary basis.

ALiSEA network will cover costs of participation to workshops and conference (travel, meals and accommodations).